

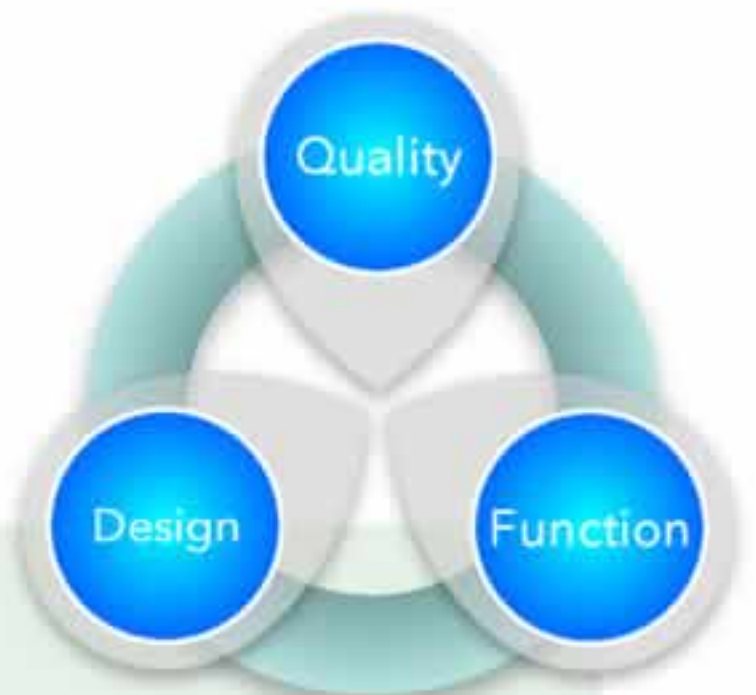
With three key advantages, the MS series is reborn



fx-MS series
– 2nd edition –

There's a reason these are the calculators of choice in the field of education.

The new CASIO MS series is a family of scientific calculators that offer three key advantages useful in educational settings.



Design Simple and easy to use

Optimal education tools realized through a design that emphasizes comfort in the hand, legibility, and usability through the pursuit of simplicity



Instantaneous key recognition and ease of operation, the result of careful attention to design details

More comfortable in the hand!



A rounded design that fits naturally in the hand and a slim body that's comfortable to hold

Attachable and detachable in any direction!



Hard case that's attachable and detachable in any direction for greater ease of use

More legible!

14% larger surface area



The frequently used number keys have been enlarged, and the keys are printed in an easy-to-read font.

Easier to use!



Highly visible, easy-to-press cursor keys and function keys

Function High functionality, excellent operability

Functions designed with education in mind

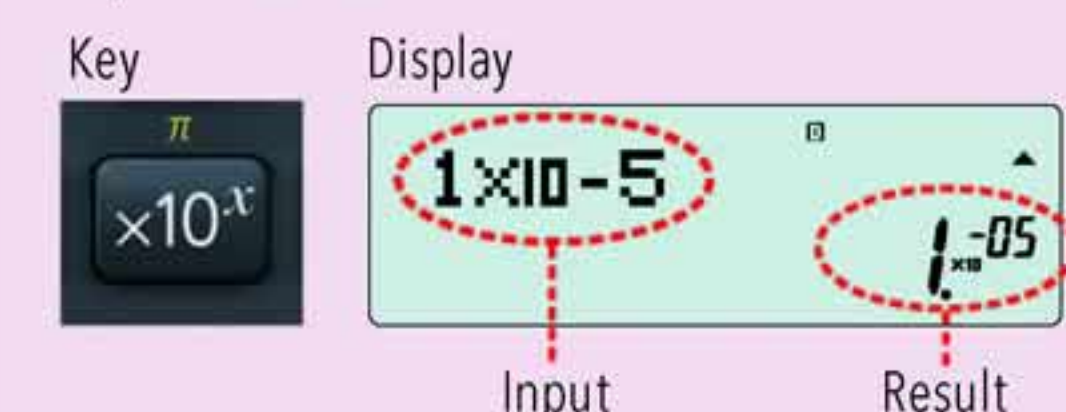
Equipped with functions necessary for education

MS series calculators come with scientific calculation, statistical calculation, differential* and integration* functions.

* fx-991MS 2nd edition, fx-570MS 2nd edition, fx-100MS 2nd edition only

Exponent notation is the same as the notation in textbooks.

Exponential format

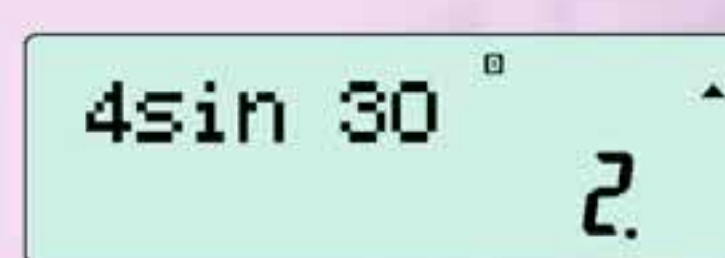
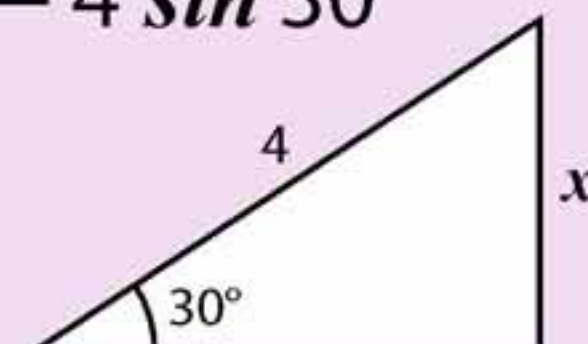


S-V.P.A.M.

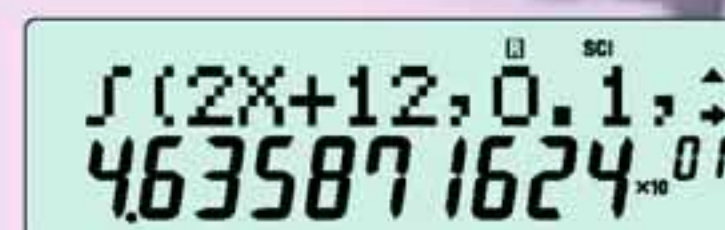
Super Visually Perfect Algebraic Method

Input and calculate in textbook format.

$$x = 4 \sin 30^\circ$$



Two-line display lets you view the expression and its result at the same time.



Move the cursor to make changes for recalculation without having to input the entire expression.

Quality Authentic quality

Excellent quality and authentication ensure confidence and peace of mind for use in educational settings

1 Excellent quality CASIO has established three criteria to ensure excellent quality in the MS series.

Quality feature 1 Wear-resistant printing



Since these calculators are products used as educational tools for long periods of time, materials that ensure robust key durability and prevent wear or fading of key markings are used to ensure product quality.

Quality feature 2 Drop-resistant body



High product quality prevents key malfunction due to drop impact if a calculator falls to the floor from a desk in the classroom or display (LCD) or key breakage if a calculator is accidentally crushed in a schoolbag.

Quality feature 3 Environmentally friendly

Testing apparatus	Unit: parts per million (ppm)		
	Harmful substances	Upper limit	Content
	Cd	≤100	Clear
	Pb	≤1000	Clear
	Cr ⁶⁺	≤1000	Clear
	Hg	≤1000	Clear
	Br*	≤1000	Clear

Product component analysis results
Compliant with RoHS environmental regulations
The materials used in MS series calculators comply with European RoHS environmental regulations, an international standard. The product quality reflects concern for health and the environment.
* Complies with DEHP, BBP, DBP, DIBP.

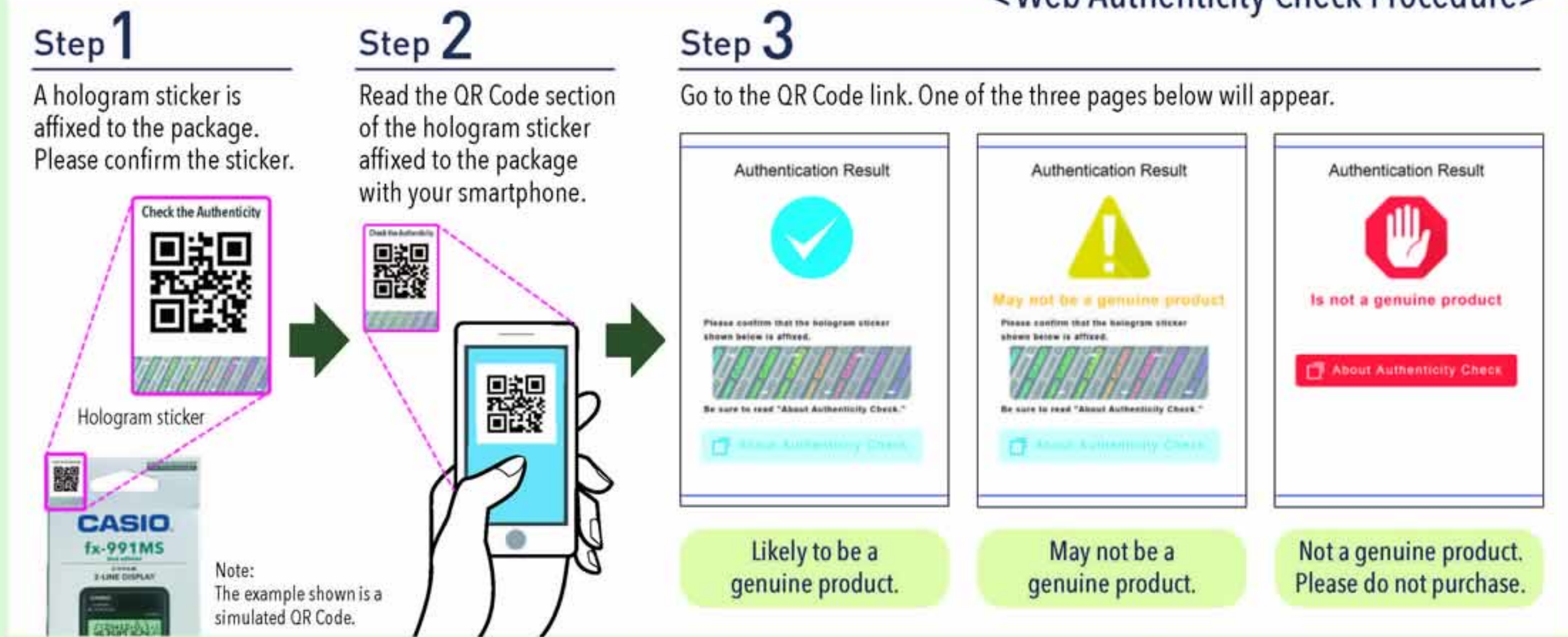
These three quality features ensure that CASIO MS series calculators are educational tools that provide effective support for learning.

2 Authenticity Check A sticker printed with a QR Code* and hologram is affixed to each CASIO MS series calculator package. A product can be authenticated by scanning the QR Code and confirming it using the Web Authenticity Check System and examining the hologram.

* QR Code is a registered trademark of DENSO WAVE INCORPORATED in Japan and other countries.

Web Authenticity Check System This system is a service for checking the authenticity of a product by reading a QR Code on a hologram sticker affixed to the product.

<Web Authenticity Check Procedure>



Note: The Web Authenticity Check estimates the authenticity of the hologram sticker based on QR Code read status trends. This check does not necessarily guarantee the product is genuine.

Hologram sticker A QR Code and sticker printed with a hologram as shown below are affixed to the product package.



The hologram has an iridescent rainbow color section and a shiny white section, and the CASIO logo is visible.

Note: This differs from the actual colors because color shades vary depending on the direction of the light.
The hologram sticker has the following characteristics that make it difficult to copy.
• When the sticker is tilted to the left and right, the color changes.
• When the sticker is rotated, the shading is reversed.

Use the above characteristics to authenticate a product.



fx-82MS 2nd edition



240
FUNCTIONS

[Product Code]
fx-82MS-2

fx-85MS 2nd edition



[Product Code]
fx-85MS-2

fx-350MS 2nd edition



[Product Code]
fx-350MS-2

fx-95MS 2nd edition



244
FUNCTIONS

[Product Code]
fx-95MS-2

Main functions

- Fraction calculations
- Combination and permutation
- Statistics (STAT-data editor, Standard deviation, Regression analysis)
- 9 variables

fx-95MS 2nd edition only

- Equation calculations



fx-991MS 2nd edition



401
FUNCTIONS

[Product Code]
fx-991MS-2

fx-570MS 2nd edition



[Product Code]
fx-570MS-2

fx-100MS 2nd edition



300
FUNCTIONS

[Product Code]
fx-100MS-2

Main functions

- Fraction calculations
- Combination and permutation
- Statistics (STAT-data editor, Standard deviation, Regression analysis)
- 9 variables
- Equation calculations
- Integration/differential calculations
- Base-*n* calculations/conversions
- Complex number calculations
- CALC function
- SOLVE function

fx-991MS 2nd edition / fx-570MS 2nd edition only

- Matrix calculations
- Vector calculations
- Scientific constants
- Metric conversions



FUNCTION SYMBOLS

401 FUNCTIONS Number of functions

2-LINE DISPLAY 2-line display

S-V.P.A.M. S-V.P.A.M. (Super Visually Perfect Algebraic Method)
All the features of the existing V.P.A.M. series plus a new 2-line display and a useful Replay function. All this helps to make mathematics easier to use and easier to understand than ever before.

STAT-data STAT-data editor
Back-step viewing and editing of input data.

Multi-replay Quick and easy recall of previously executed formulas for editing and re-execution.

10+2 DIGITS 10 + 2 digits
10-digit mantissa + 2-digit exponential display.

DOT MATRIX Dot matrix display
High-resolution screen provides beautiful looking every time.

Plastic Keys Plastic keys
Designed and engineered for easy operation.



		fx-82MS 2nd edition	fx-85MS 2nd edition	fx-350MS 2nd edition	fx-95MS 2nd edition	fx-991MS 2nd edition	fx-570MS 2nd edition	fx-100MS 2nd edition
Specifications	Number of functions	240	240	240	244	401	401	300
	Power supply	AAA × 1 (R03)	Two-way power (Solar + LR44 × 1)	LR44 × 1	AAA × 1 (R03)	Two-way power (Solar + LR44 × 1)	AAA × 1 (R03)	AAA × 1 (R03)
	Display	12characters and 10 + 2 digits	12characters and 10 + 2 digits	12characters and 10 + 2 digits	12characters and 10 + 2 digits	12characters and 10 + 2 digits	12characters and 10 + 2 digits	12characters and 10 + 2 digits
Utilities	CALC and SOLVE functions	—	—	—	—	●	●	●
	Variables	9	9	9	9	9	9	9
Special Features	Scientific constants	—	—	—	—	40	40	—
	Metric conversions	—	—	—	—	40	40	—
	Base- <i>n</i> calculations, Logical operations	—	—	—	—	●	●	●
	Engineering notation (ENG/ENG)	●	●	●	●	●	●	●
Basic Functions*		●	●	●	●	●	●	●
Algebra	Equations	—	—	—	●	●	●	●
	Matrix calculations	—	—	—	—	●	●	—
	Complex number calculation	—	—	—	—	●	●	●
Statistics	Standard deviation	●	●	●	●	●	●	●
	Regression analysis	●	●	●	●	●	●	●
	Other regressions	●	●	●	●	●	●	●
Geometry	Vector calculations	—	—	—	—	●	●	—
Probability	Combination, permutation	●	●	●	●	●	●	●
Calculus	Differential calculation	—	—	—	—	●	●	●
	Integration calculation	—	—	—	—	●	●	●
Dimensions (H × W × D)		13.8 × 77.0 × 161.5 mm	11.1 × 77.0 × 161.5 mm	11.1 × 77.0 × 161.5 mm	13.8 × 77.0 × 161.5 mm	11.1 × 77.0 × 161.5 mm	13.8 × 77.0 × 161.5 mm	13.8 × 77.0 × 161.5 mm
Weight (Including battery)		105 g	95 g	95 g	105 g	95 g	105 g	105 g

* Basic Functions: •Trigonometric, inverse trigonometric (sin/cos/tan/sin⁻¹/cos⁻¹/tan⁻¹) •Hyperbolic, inverse hyperbolic (sinh/cosh/tanh/sinh⁻¹/cosh⁻¹/tanh⁻¹) •Exponential, logarithmic (log, ln, 10^x, e^x) •Power and radical root (x^y/^y) •Fraction •Percentage calculation (%) •Rounding •Sexagesimal ↔ decimal •Display format (FIX, SCI) •Angle unit (Deg, Rad, Grad) •Angle unit conversion (Deg, Rad, Grad)

Visit our website for more information about the fx-MS series.
<https://edu.casio.com>



<https://www.facebook.com/CASIO-Calculators-Global-155268021727400/>



• Designs and specifications are subject to change without notice.

CASIO COMPUTER CO., LTD. Tokyo, Japan